



LIGHTING POWER

DN STAGE LEFT 400A 3 PHASE

TAILS REQUIRED

50' FEEDER NEEDED TO GET UPSTAGE LEFT

125' FEEDER NEEDED TO GET UPSTAGE RIGHT

CAM-LOCK PASS THROUGH OFF STAGE LEFT

FROM SLS LIGHTING DISTRIBUTION

AUDIO POWER

DN STAGE LEFT 200A 3 PHASE

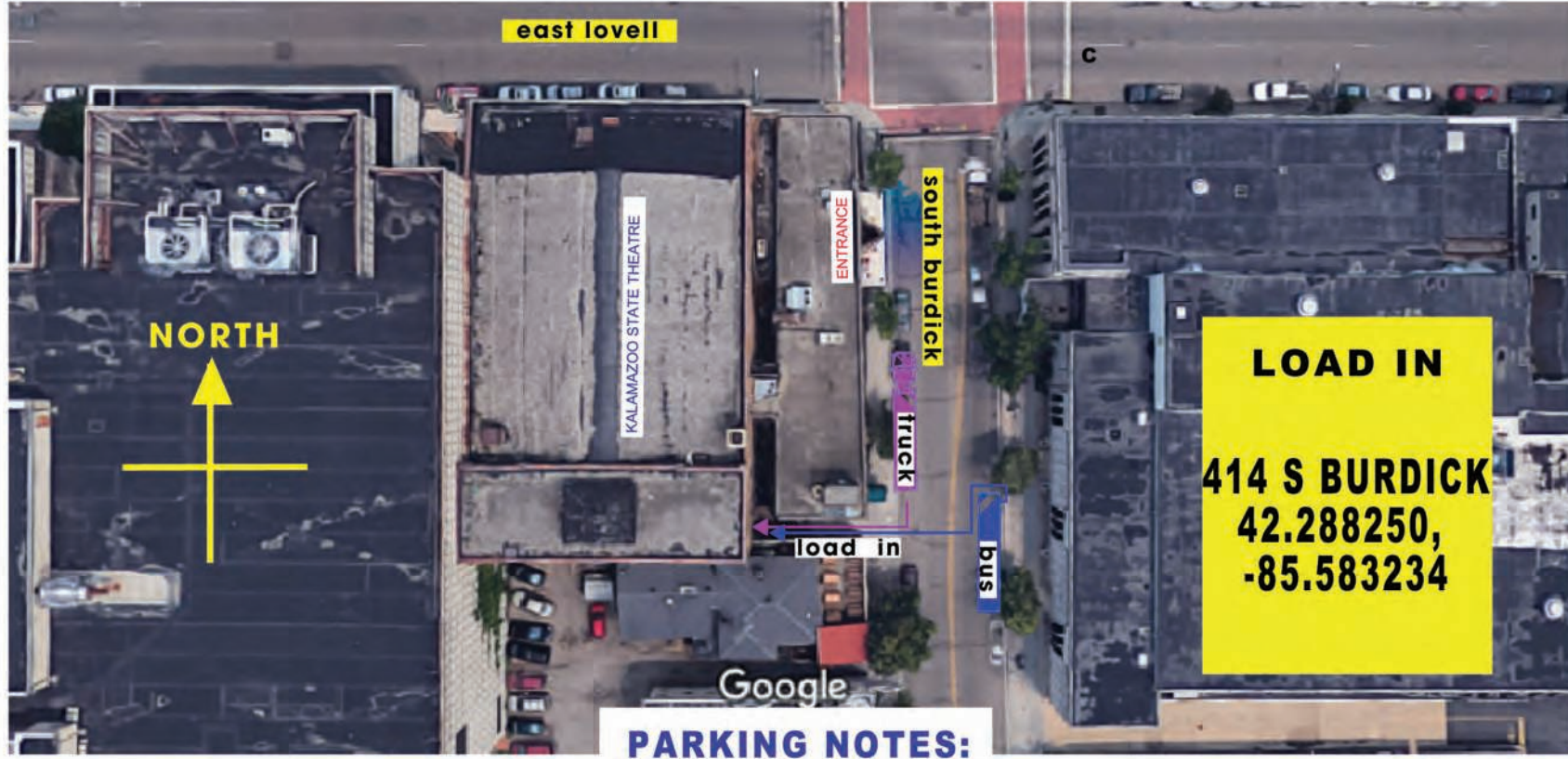
50' FEEDER NEEDED TO GET TO MONITOR POSITION STAGE LEFT

TAILS REQUIRED

CAM-LOCK PASS THROUGH LOCATED IN MONITOR POSITION

FROM SLS AUDIO DISTRIBUTION





BUSES, TRUCKS & TRAILERS: ALL PARK FACING NORTH.

TRUCKS/TRAILERS: PULL UP ON THEATRE SIDE OF BURDICK, LEAVING PLENTY OF ROOM IN THE BACK FOR LOADING. DO NOT PARK PAST "LOADING ZONE" SIGNS AS THIS IS A FIRE LANE.

BUSES: PARK ACROSS FROM THEATRE ON BURDICK AT HOODED METERS. SHORE POWER LIVES THERE.

OTHER VEHICLES: USE LOT 14 OR 3 - BOTH SOUTH OF THEATRE OFF BURDICK. QUESTIONS? CALL NICOLE AT 269-216-5555



DRESSING ROOM/TOUR PRODUCTION OFFICE/CATERING

LOWER LEVEL

1	Green Room
1	Production Office
4	Dressing Rooms 8' x 11'
1	Kitchen/Food Prep Room
1	Dining Space 20' x 15'
1	Common Bathroom with Multiple Stalls
1	Shower Room



SECOND LEVEL

1	Principle dressing room with private shower and toilet
1	Auxiliary Room

THIRD LEVEL

3	Dressing Rooms
---	----------------

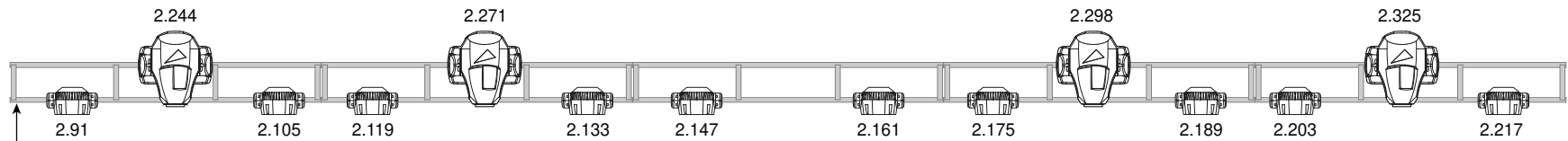


KALAMAZOO STATE THEATRE | TECH PACK | BOOKING@KAZOOSTATE.COM

3' Crossover space behind drape

Full Black 27' from D/S edge

Empty Batten for tour backdrop 25' from D/S edge

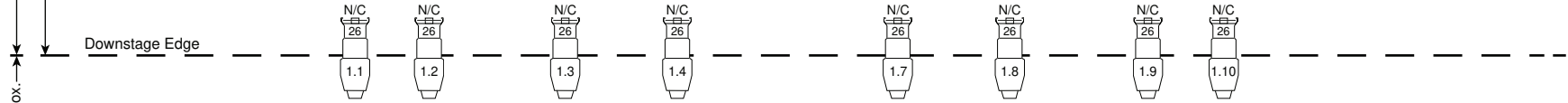


<p>Quantum Profile 27-chan mode</p>	<p>GLP X4S 14-chan mode</p>	<p>Chauvet ColorDash Quad PAR 18 4-chan mode</p>	<p># ← Dimmer # ← Channel # ← Lens Type # ← Color Source Four</p>	<p>Ch.1 Ch.2 Ch.3 9-Lite Blender</p>	<p>1 - Antari HZ-350 oil-based hazer at stage left. 1-chan On/Off non-variable, Address 2.512</p> <p>2 - Lycian 1.2K Starklight spots at projection booth. Clearcom compatible intercom at FOH, spots, and houselight control. Dimming and lighting power at stage left.</p>	<p>Artist: House Lighting Plot</p> <p>Venue: Kalamazoo State Theatre</p> <p>Date: 4 June 2021</p> <p>Drawing: D. Downey</p>
---	---------------------------------	--	---	--	--	---

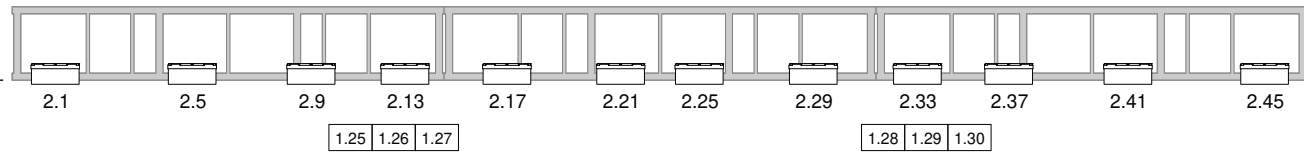
22' Approx.

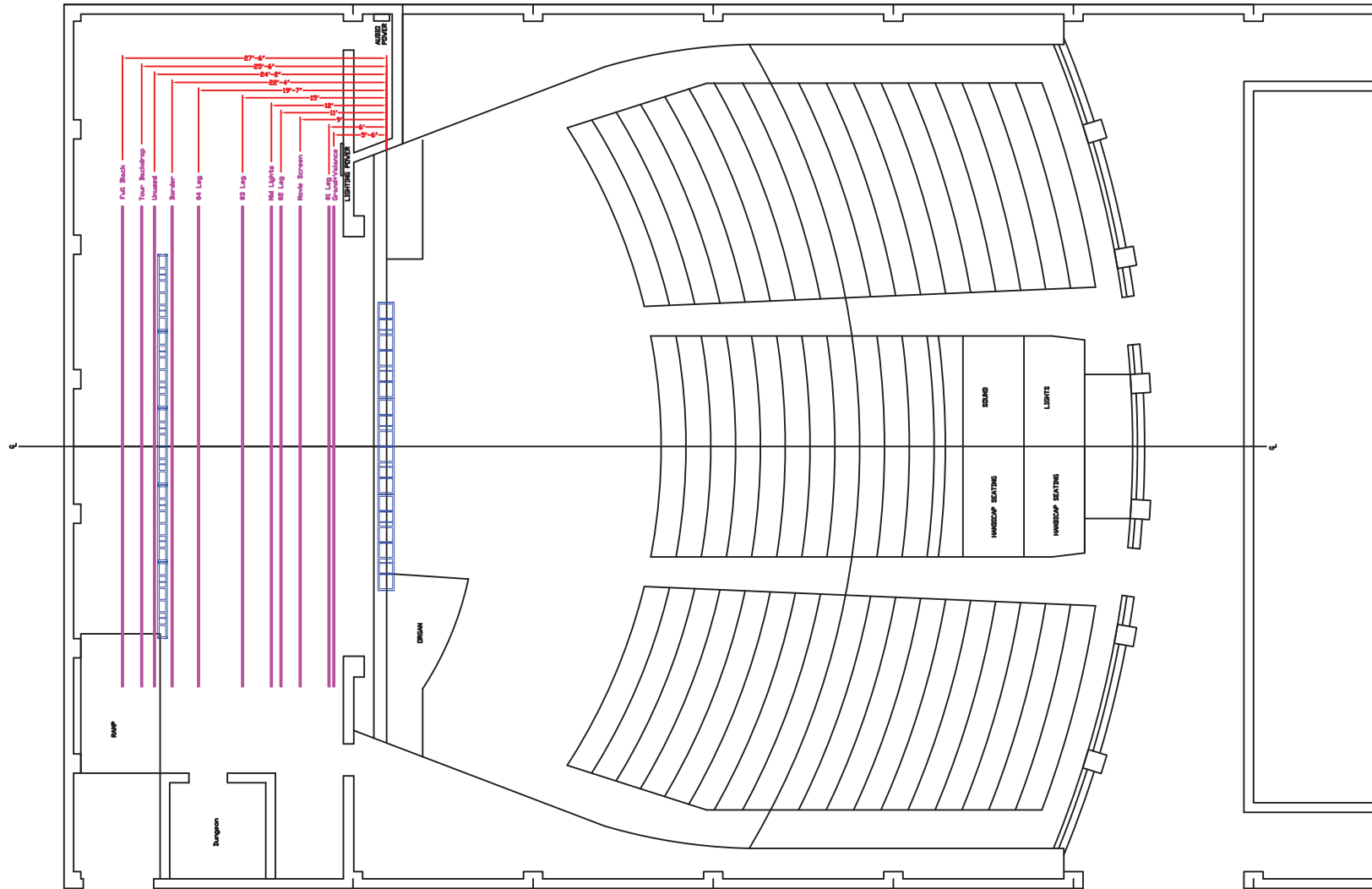


11' Approx.



3' Approx.





CAVEAT QUARTER

Stairs from stage to audience is available upon request

Line sets are full. Working on future capabilities to open

SLS
Production
Services

1711 Vanderbilt Ave.
Portage, MI 49024
Tel: 269-343-3787
Fax: 269-343-3781

KALAMAZOO STATE THEATRE
404 S. BURDICK ST. KALAMAZOO, MI 49007

SCALE: 3/16" = 1'
PROJECT NUMBER:

DATE: 10 OCTOBER 2019

DRAWN: DD

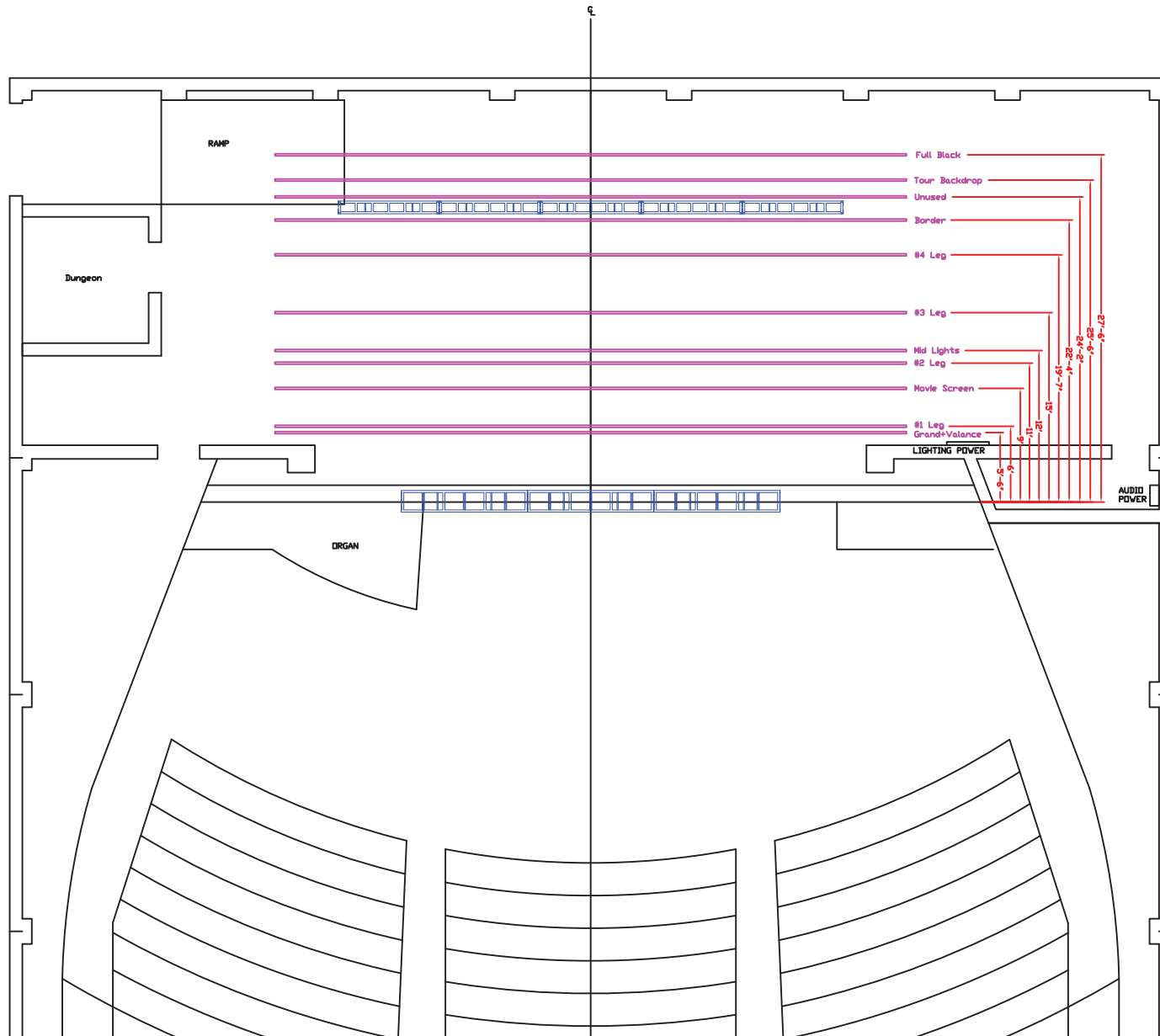
APPROVED:

PAGE: 1 OF 1

SHEET:

FLOOR PLAN





SLS
Production
Services

1711 Vanderbilt Ave.
Portage, MI 49024
Tel: 269-343-3787
Fax: 269-343-3781

KALAMAZOO STATE THEATRE
404 S. BURDICK ST. KALAMAZOO, MI 49007

SCALE: 1/4" = 1'
PROJECT NUMBER:
DATE: 10 OCTOBER 2019
DRAWN: D. Downey APPROVED:
PAGE: 1 OF 1
SHEET:
RIGGING PLAN



PRODUCTION INFORMATION

STAGE DIMENSIONS	42' wide x 30' deep Includes crossover, 27' working depth
STAGE HEIGHT	3'4" from auditorium floor to lip of thrust
PROSCENIUM OPENING	43'7" W X 28' H
GRID HEIGHT	64'
PROSCENIUM RIGGING POINTS	4 points Downstage of proscenium, limit 1 ton per point (already being used)
AUDIO MIX LOCATIONS	House right from center
LIGHTING OPERATOR LOCATION	60' from stage, 8' x 12'
COURTESY OUTLETS	5 down stage left 1 down stage right
SPOTLIGHTS	2 x 1.2k Lycian Starklights

IN-HOUSE AUDIO OWNED BY SLS:

JBL 4888 MAINS (10 PER SIDE)
JBL 4880 SUBS ON THE STACKED (2 PER SIDE)
JBL 4882 SUBS STACKED (4 PER SIDE)
JBL AC 18 FRONT FILL (3)
JBL AC 115 FRONT FILL/CORNER FILL (2)
JBL 5 WAY PRESET
CROWN HD AMPLIFIERS
DBX 4800 SYSTEM MATRIX AT FOH
AVO PEARL EXPERT LIGHTING DESK

WiFi – Fiber Metro E (up to 250Mbps / up to 15 Mbps upload) A-Symmetrical

